

MERCY PARTNERS FORMATION



To contribute to the emergence of a world where the healing, liberating and life-giving mercy of God is experienced.

Mercy Partners Mission Statement

FORMATION FOR MISSION

The aim of Mercy Partners formation is the development of, and support for confident, effective and enabling leadership for mission. Mercy Partners Formation provides accessible, relevant, engaging, mission-focussed support for Ministry Leaders.

Formation is much more than training and education because it is about the internalisation of values, attitudes and ways of seeing, and the maturation of faith. It is something that we do in cooperation with God. Formation seeks to develop in us sensitivity to where God is leading our lives and our mission (Curtin, 2012).

It is part of the responsibility of all Public Juridic Persons to provide formation opportunities for the leaders of the ministries that they sponsor so that aspects of mission and charism will develop in response to future realities (Wright 2015).

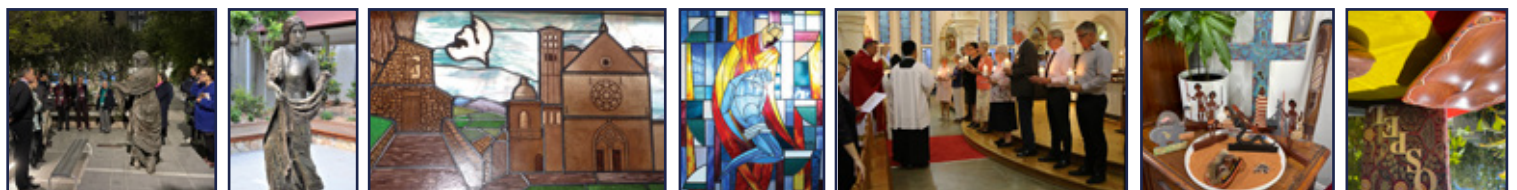
OUR THEOLOGICAL FRAMEWORK

The Mercy Partners Theological Framework acknowledges that Mercy Partners is on a journey – that there is no pre-determined path for the practical actions and progress of a Public Juridic Person (PJP).



The Theological Framework therefore articulates a theology for understanding the mission statement of Mercy Partners in the context of the faith tradition and the growing reality of lay-led Public Juridic bodies in governance of Catholic ministries and in the Church more broadly.

The Theological Framework is a living document, enabling Mercy Partners to work with ministries in the nurturance of mission and core values. In particular, the Framework will be used in prayer resources, retreats and leadership seminars as well as providing critical theological reflection around core concepts of the mission we are called to in the light of scripture, Church teaching and God's ongoing revelation in our world.



COMPASSION JUSTICE RESPECT HOPE

Acknowledgement of Country

We acknowledge the traditional owners of the lands on which we walk, live and work. We recognise their living culture and their unique role in the life of this area. We pay tribute to all of those who have nurtured this country over many thousands of years, deriving spiritual and physical needs from the seas, forests, soil, rivers, lakes and streams. We join with First Nations people in honouring this land as sacred. We welcome the Uluru Statement from the Heart and support an Indigenous voice to parliament, enshrined in the Australian Constitution.



OUR HERITAGE



Nano Nagle (1718-1784) was born in Cork, Ireland, in 1718 during the notorious Penal Laws which sought to subjugate the Catholic population. Nano Nagle responded to the extreme poverty of her time by opening schools in Cork to educate children of the poor. Nano Nagle also visited the sick and the elderly in the evenings earning the nickname 'The Lady with the Lamp'. In 1775, Nano Nagle founded the Sisters of the Presentation of the Blessed Virgin Mary. The Sisters arrived in Australia in 1866 opening their first school in Tasmania..



Catherine McAuley (1778-1841) opened the House of Mercy in Dublin in 1827. Catherine McAuley's outreach was to all in need, but she had a special regard for girls and young women of the poorer classes who were frequently exploited and rarely had access to education. She established twelve Mercy foundations in Ireland and two in England and at the time of Catherine's death there were 150 Sisters of Mercy. The Sisters of Mercy came to Australia in 1846.



Elizabeth Hayes (1823-1894) was a scholar, teacher, pioneer journalist and foundress of the Missionary Franciscan Sisters of the Immaculate Conception, was a passionate Franciscan and a dedicated missionary. As Sister Mary Ignatius of the Franciscan Sisters, Glasgow, she travelled to Jamaica, Paris, Rome, St Thomas Island, Boston and Belle Prairie. In Belle Prairie she established schools, a novitiate and a printing press, producing the first Franciscan journal in English. The Missionary Franciscan Sisters of the Immaculate Conception Sisters came to Australia in 1930.

*Just as the
founders of
religious
congregations
responded to
the needs of their
times with love,
respect,
compassion
and mercy,
so too are we
called in our age
to respond.*

Mercy Partners
Theological Framework, p15

MERCY PARTNERS PRAYER

Light of Christ, flame of our hearts,
lead us kindly
that we may lead others kindly.

Catherine McAuley, lady of light,
hold high that flame on the road before us.

Nano Nagle, lady of the lantern,
remind us to shine our own lanterns
into those places from which
we would prefer to turn away.

Elizabeth Hayes, bearer of light,
guide our footsteps in the way of peace,
gentleness and love.

May we be true leaders as we take the light
forward with Mercy Partners.

We believe in the light.

We are called by the fire.

We share the one flame. Amen.

Adapted from the Gathering Prayer by Mary Wickham rsm



CORE ELEMENTS Board members, as part of their appointment, are required to engage with the four elements below during their tenure.



Living out the mission of Mercy Partners entails collaborating with others at every turn

Mercy Partners
Theological Framework,
p21



The building of partnerships cultivates diversity of gifts and charisms, embracing lay leadership and creatively responds to the changing needs of many ministries.

WE PROVIDE SERVICES FOR

- ▶ Mercy Partners Council and committees
- ▶ Religious from our foundation congregations
- ▶ Leaders of ministries — directors, executive, key staff and emerging leaders
- ▶ Leaders from cross-sector ministries
- ▶ Ministries seeking governance support

WE ARE COMMITTED TO

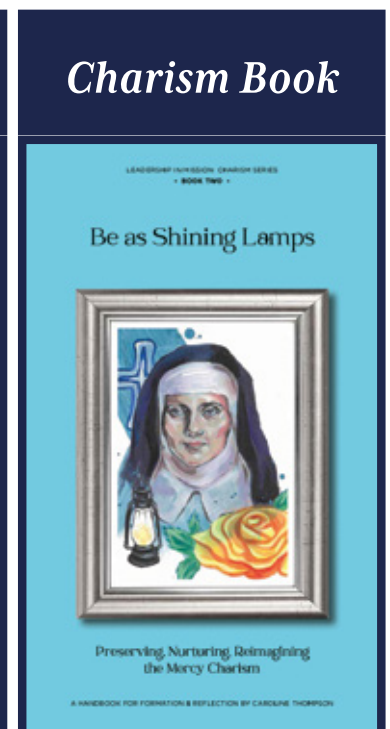
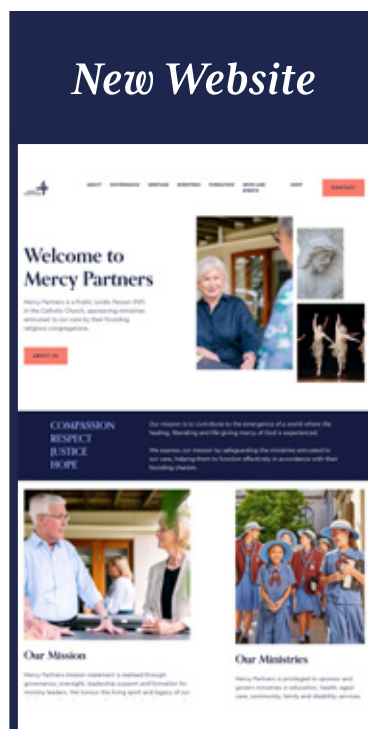
- ▶ Honouring local experience and culture
- ▶ Enriching charism
- ▶ Ensuring flexibility and needs driven content
- ▶ Enhancing relationships and connection
- ▶ Embracing indigenous wisdom and culture
- ▶ Respecting adult learning needs
- ▶ Building capacity for mission
- ▶ Enhancing Church community and networking

WE FACILITATE AND PROVIDE

- ▶ Resources
- ▶ Induction
- ▶ Succession planning
- ▶ Pilgrimages and retreats
- ▶ Web-based content and support
- ▶ Forums
- ▶ Programs
- ▶ Mission support
- ▶ Strategic planning and mission auditing
- ▶ Inter agency networking

Because we are partners, our relationships rely more on the formative value of friendship and collective vision than on inflexible institutional structures.

Mercy Partners Theological Framework, p3



FOR FURTHER SUPPORT:

Director of Formation: Dr Caroline Thompson: caroline.thompson@mercypartners.org.au | 0432 692 601

Formation Manager: Libby Blom: libby.blom@mercypartners.org.au | 0400 757 760

Website: For resources and support documents go to www.mercypartners.org.au

Mercy Partners office: 142 Flower Street, Northgate | 07 3267 5840 | formation@mercypartners.org.au